



**DURHAM CATHOLIC
DISTRICT SCHOOL BOARD**
Learning and Living in Faith

Memorandum

To: Board of Trustees

From: Tracy Barill, Director of Education

Date: December 19, 2022

Subject: **Brooklin Regular (English) Track Study – Presentation**

Origin: Scott Grieve, Superintendent of Business, Finance and Facilities Services
Mike O’Neill, Superintendent, Whitby Family of Schools

Purpose

The purpose of this report is to review with the Board of Trustees the recommendations being made regarding boundary changes to the Brooklin Regular (English) Track program.

SG/MON/eb



**DURHAM CATHOLIC
DISTRICT SCHOOL BOARD**
Learning and Living in Faith

Brooklin Regular (English) Track Study

Trustee Presentation

December 19, 2022



Rooted in Faith
Excellence | Equity | Engagement



Agenda

1. Welcome
2. Communication, Boundary Process, Committee Mandate & Members, Trustee Mandate
3. Background Information (Development, Projections, Staffing, Transportation)
4. Staffing & Transportation
5. Review public input
6. Recommended Option
7. Implementation
8. Closing Q&A





**DURHAM CATHOLIC
DISTRICT SCHOOL BOARD**
Learning and Living in Faith

Welcome

- Welcome & Opening Remarks
- Introduction of presenters
 - Superintendent O'Neil - Whitby Family of Schools
 - Superintendent Grieve - Business, Finance, Facilities Services
 - Jody Dale - Planning Officer
 - Lewis Morgulis – Planning Consultant



Rooted in Faith
Excellence | Equity | Engagement



**DURHAM CATHOLIC
DISTRICT SCHOOL BOARD**
Learning and Living in Faith

Communication Protocol

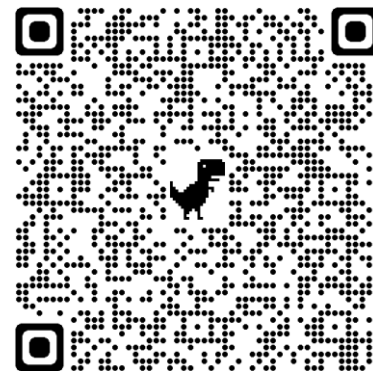
- Phone line, email and online feedback form will be checked on a daily basis
- Regular updates will be made to the website

Dedicated phone line:
(905) 576-6150 Ext. 42252

Website:
www.dcdsb.ca/boundaryreviews

Email address:
planning@dcdsb.ca

**Online Feedback Form:
QR Code**



Rooted in Faith
Excellence | Equity | Engagement



Boundary Process

Boundary Review Process

1. Staff develop draft boundaries for review by Administrative Council
2. The draft boundaries are brought forward to Trustees for Approval “In Principle”
3. Staff are directed to meet with the affected school communities to present the approved “In Principle” boundaries and receive public input
4. Staff review all input and present the proposed final boundaries to the Board of Trustees for approval
5. The Board of Trustees provides final approval to the boundaries
6. Staff communicate the approved boundaries to all affected parents and guardians of students living within the school boundaries and communicate all changes to attendance





Board Meetings

- The September 26, 2022 Board report included committee meetings and public meetings that will be used to review the data and receive input on the recommended option.

Rationale:

- French Immersion in Brooklin was consolidated at St. Leo in 2020
 - Regular (English) Track enrolment is imbalanced in Brooklin for future growth
- Board of Trustees meeting of December 19, 2022 – Delegation opportunity and Trustee review and approval of final boundary





**DURHAM CATHOLIC
DISTRICT SCHOOL BOARD**
Learning and Living in Faith

Committee Members

1. Mike O'Neil, Superintendent of Education (Chair)
2. Scott Grieve, Superintendent of Facilities Services
3. Daniel Carlin, Manager of Planning, Admissions and Capital.
4. Jackie McVeigh, Manager of Human Resources
5. Kelly Mechoulan, Manager of Durham Student Transportation Services
6. Angela Rancourt, Principal St. Leo Catholic School
7. Cathy Faria, Principal St. John Paul II Catholic School
10. James Tremblay, Principal St. Bridget Catholic School
11. Amanda Roffey, Communications Manager
12. Luetasha Watkins, Manager Early Learning and Childcare
13. School Council Chairs
14. OECTA
15. CUPE (Representatives for each school)
16. YMCA



Rooted in Faith
Excellence | Equity | Engagement



**DURHAM CATHOLIC
DISTRICT SCHOOL BOARD**
Learning and Living in Faith

Committee Mandate

The Board of Trustees approved the following on September 26, 2022:

“THAT the Durham Catholic District School Board approve ‘In Principle’ the proposed boundary revisions to the Brooklin Regular Track Program, which would be effective September 1, 2023. Upon approval, staff will initiate consultations with the stakeholders and Brooklin community.”



Rooted in Faith
Excellence | Equity | Engagement



Committee Mandate

The task of the Committee is to:

- Review all available data and previous Regular Track reports
- Review all of the potential solutions to address the Regular Track programs at St. Leo CS, St. John Paul II CS and St. Bridget CS
- Recommend a preferred option to the Board of Trustees for the RT programs in Brooklin.
- Recommend a method to implement the preferred option.



Trustee Mandate

The decision regarding the final option to ensure long-term sustainability of Regular Track English programming in Brooklin and the method that will be used to implement it rests with the Board of Trustees.





Discovery 2023

Alignment to The Boards Strategic Plan: Discovery 2023: Renewing the Vision

Excellence: Learning about and using current, research-based best practices.

Equity: Providing access to a broad range of programs, pathways and vocations

Engagement: Ensuring transparent decision making processes.

Managing Resources:

To ensure allocation of resources that reflects the principles of equity and financial stewardship.





**DURHAM CATHOLIC
DISTRICT SCHOOL BOARD**
Learning and Living in Faith

School Information



Rooted in Faith
Excellence | Equity | Engagement



**DURHAM CATHOLIC
DISTRICT SCHOOL BOARD**
Learning and Living in Faith

School Information



St. John Paul II Catholic School

- The school was constructed in 2013
- St. John Paul II CS is located on the east side of Brooklin
- A French Immersion (FI) program was located in the school when it opened in 2013 and transitioned to St. Leo in 2021
- An Early ON centre serving parents and pre-school children was added to the school in 2017.
- The capacity of the school is 458 pupils.
- In the school's first year there were 294 total students in both the Regular Track and French Immersion program
- St. John Paul II CS reached a peak enrolment of 389 total students in 2018.



Rooted in Faith
Excellence | Equity | Engagement



**DURHAM CATHOLIC
DISTRICT SCHOOL BOARD**
Learning and Living in Faith

School Information



St. Leo Catholic School

- St. Leo Catholic School was constructed in 1998 as a replacement to the original building, and had an 8 classroom addition in 2004.
- The addition was converted into a child care centre in 2018 and serves both a preschool and school aged population.
- St. Leo CS is located in the central area of Brooklin
- Consolidated the Brooklin French Immersion program at St. Leo in 2020
- The capacity of the school is 266 pupils
- St. Leo CS reached a peak enrolment of 616 total students in 2012.



Rooted in Faith
Excellence | Equity | Engagement



**DURHAM CATHOLIC
DISTRICT SCHOOL BOARD**
Learning and Living in Faith

School Information



St. Bridget Catholic School

- St. Bridget Catholic School was constructed in 2004 with a 6 classroom addition in 2013.
- St. Bridget CS is located in the west end of Brooklin.
- The capacity of the school is 513 pupils.
- St. Bridget CS opened with a total of 279 students in 2004.
- St. Bridget CS reached a peak enrolment of 556 total students in 2012



Rooted in Faith
Excellence | Equity | Engagement



**DURHAM CATHOLIC
DISTRICT SCHOOL BOARD**
Learning and Living in Faith

Community Consultation Information



Rooted in Faith
Excellence | Equity | Engagement



Meeting Process

Meeting Type	Date/Time	Location	Attendees	Purpose of Meeting	# of Questions/Comments
Board	Sept 26, 2022, 7pm	Board office	N/A	Direction to establish Brooklin RT study committee	N/A
RT Committee	Oct 19, 2022 1-3pm	Virtual	11	Intro the committee to the process and mandate	N/A
Public In-person	Nov 8, 2022 7-9pm	St. Leo	16	Public meeting to present information and recommendation	X
Public Virtual	Nov 9, 2022 7-9pm	Virtual	4	Public meeting to present information and recommendation	3

Note: Comments and questions were gathered at the public meetings and through phone/email. Some comments that were not appropriate or relevant to the study were not included in the count.





Meeting Process

Meeting Type	Date/Time	Location	Attendees	Purpose of Meeting	# of Questions/ Comments
Public In-Person	Nov 15, 2022, 7- 9pm	St. John Paul II	8	Public meeting to present information and recommendation	X
RT Committee	Nov 16, 2022 1-3pm	Virtual	11	Review public meetings and Q&A to finalize recommendation	N/A
Board Meeting	Dec 19, 2022, 7pm	Board office	n/a	Review recommendation and make final decision	N/A



Note: Comments and questions were gathered at the public meetings and through phone/email. Some comments that were not appropriate or relevant to the study were not included in the count.



**DURHAM CATHOLIC
DISTRICT SCHOOL BOARD**
Learning and Living in Faith

Brooklin Future Development



Rooted in Faith
Excellence | Equity | Engagement



Growth and Development Policies

Growth of the Brooklin Urban Area is governed by several policies established at a provincial level and then distilled down to local planning

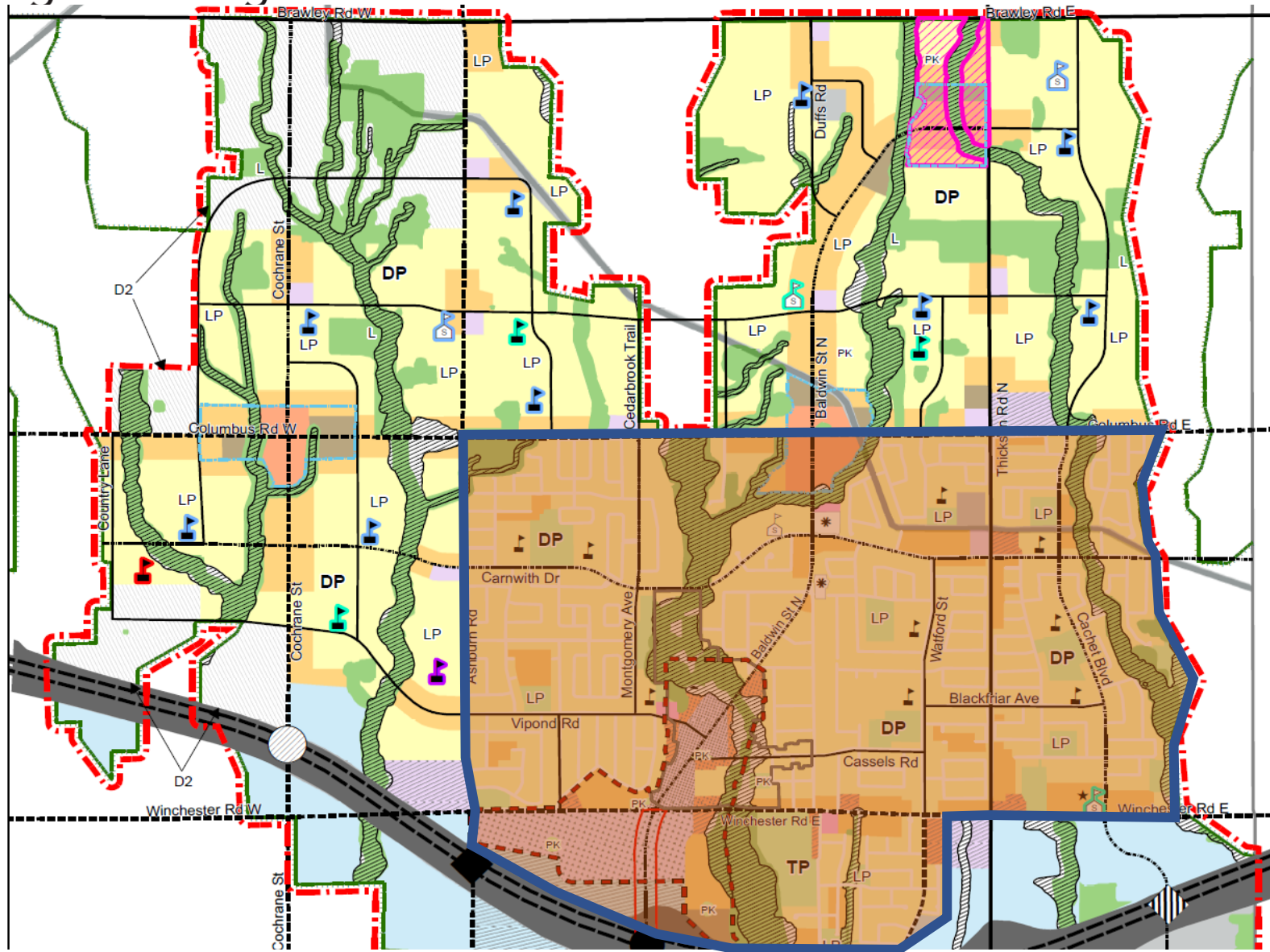
- Provincial Policy Statement 2020;
- Bill 108 More Homes More Choices Act;
- The Growth Plan for the Greater Golden Horseshoe (2018) (the “Growth Plan”);
- The Durham Regional Official Plan and ROPA 128;
- Growing Durham: Recommended Growth Scenario and Policy Directions (2008) (“Growing Durham”);
- The Town of Whitby Official Plan and OPA 90
- Brooklin Secondary Plan





DURHAM CATHOLIC DISTRICT SCHOOL BOARD

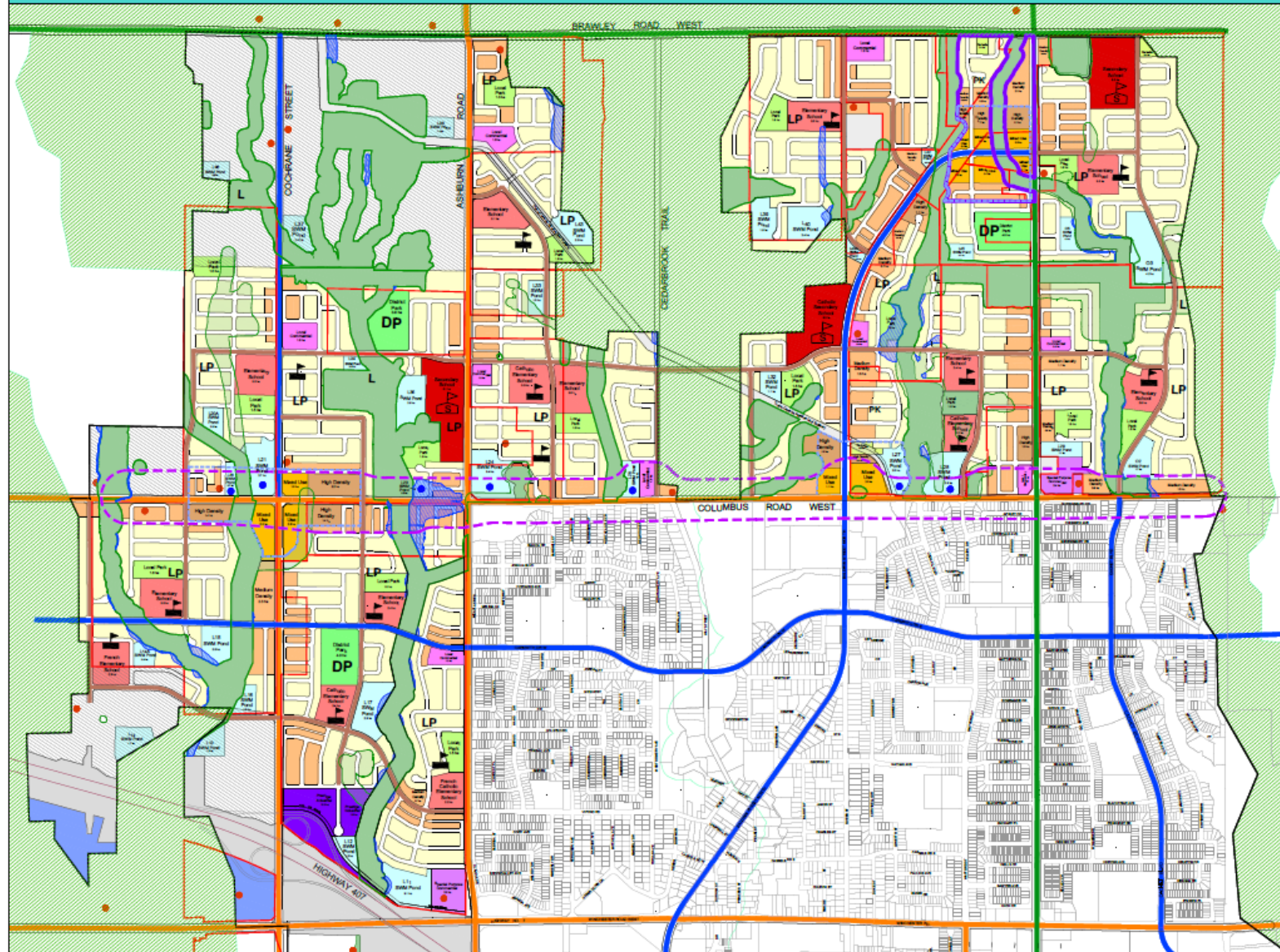
Learning and Living in Faith



Rooted in Faith
Excellence | Equity | Engagement



COMPREHENSIVE BLOCK PLAN



- ### LAND USE LEGEND
- Low Density Residential
 - Medium Density Residential
 - High Density Residential
 - Mixed Use 1 Community
 - Secondary School (6.0 ha)
 - Elementary School (3.0 ha)
 - District Park (4.0 ha)
 - Local Park (1.5 ha)
 - Parkette (0.4 ha)
 - Local Commercial
 - Special Purpose Commercial
 - Prestige Industrial
 - General Employment
 - Utilities
 - Natural Heritage System
 - Schedule "K" Natural Heritage System Limits
 - Storm Water Management Ponds
 - Greenbelt
 - Deferred Areas
 - Schedule "K" Hazard Lands
 - Special Policy Area - Refer to Section 11.5.31.6 of the Brooklin Community Secondary Plan
 - Heritage House
 - SWM Ponds within Intensification Corridor
 - Landowner Properties
 - Community Central Area
 - Regional Intensification Corridor
 - Schedule "K" Elementary School
 - Schedule "K" Secondary School
 - Schedule "K" Linkage in NHS

- ### ROAD CLASSIFICATION LEGEND
- Type A Arterial Road (36m-45m)
 - Type B Arterial Road (30m-36m)
 - Type C Arterial Road (26m-30m)
 - 23m Collector Road
 - 18m Local Road (15m Window Roads)
 - 8.5m Laneway

Notes: This preliminary draft concept is high level and without prejudice. The final road network, land use pattern, and location of community / SWM facilities are subject to further review and will be determined through the Draft Plan of Subdivision process. SWM Ponds located within the Intensification Corridor are subject to Policy 11.5.6.5 of the Brooklin Secondary Plan. Best efforts shall be made through future study work (e.g. Functional Servicing Reports) to locate these facilities outside of the Intensification Corridor.

0 500m
Date: April 30, 2019
File No. 17-2687

Prepared by:
MGP Malone Given Parsons
140 Sennew Drive, Suite 201 | Markham, ON
L3R 4B3 | 905 513 0170 | mgo.ca



Rooted in Faith
Excellence | Equity | Engagement



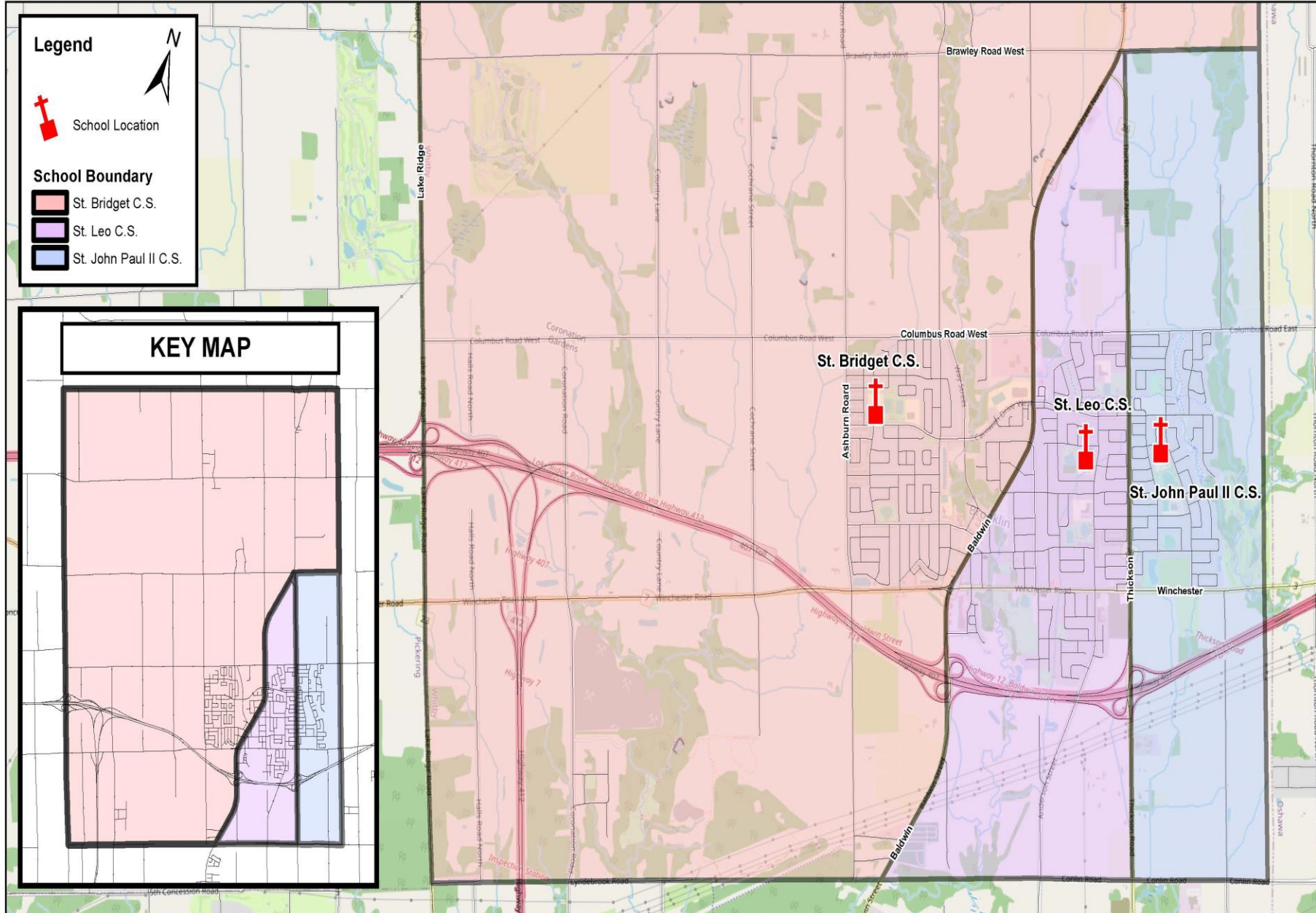
**DURHAM CATHOLIC
DISTRICT SCHOOL BOARD**
Learning and Living in Faith

Background Data and Status quo option



Rooted in Faith
Excellence | Equity | Engagement

DCDSB - Brooklin Community - Catholic Elementary Schools
Current School Location and Regular Track (English) Boundary Map

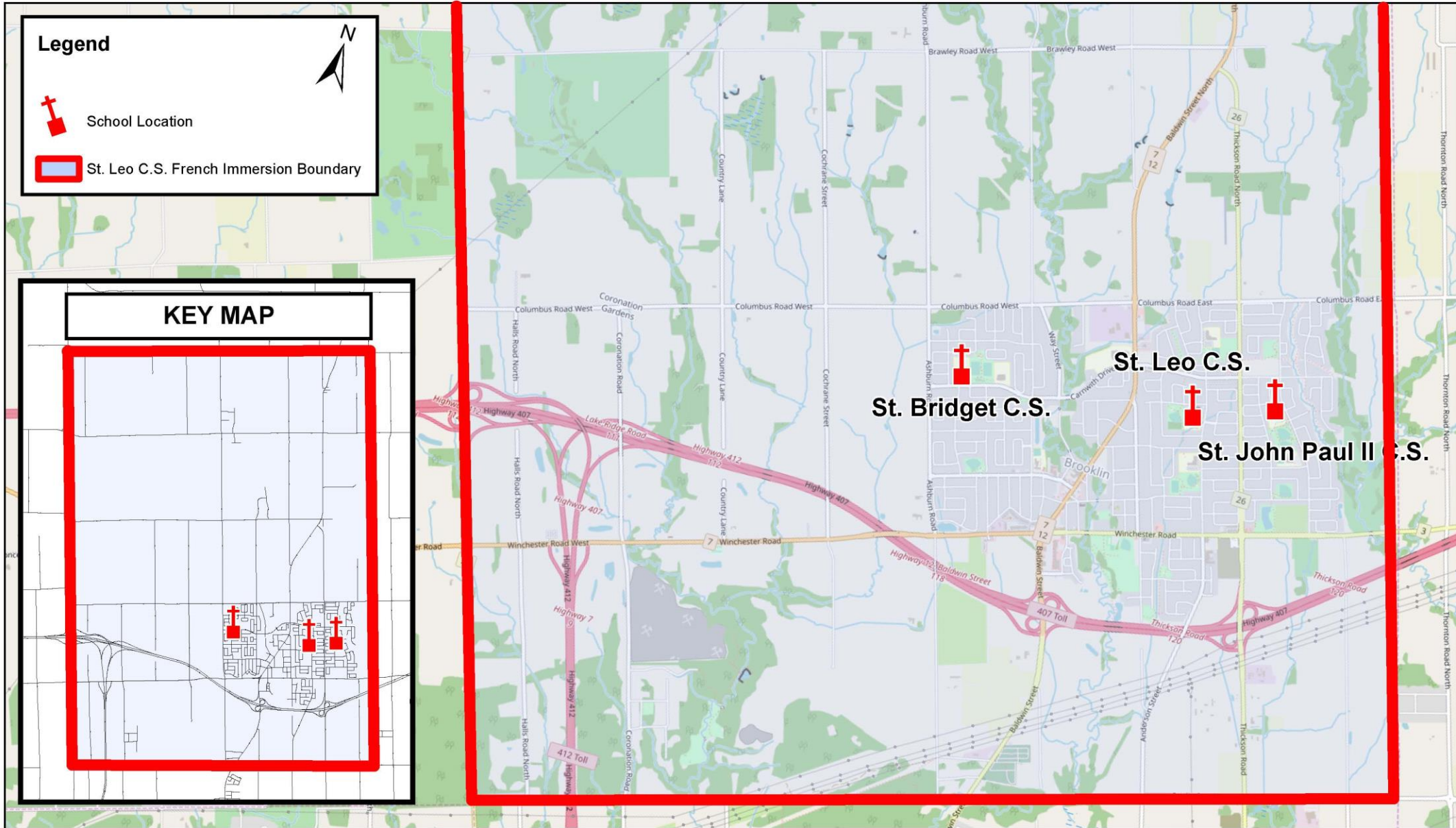


Status - Quo Option:

St. Leo CS to remain as a dual-track English and French Immersion school with several portables on site over the next 10 years.
St. John Paul II CS to remain below or just above 50% capacity over the next 10 years
St. Bridget CS to steadily increase in capacity requiring a significant number of portables after 2028



DCDSB –Village of Brooklin Catholic Elementary Schools Current School Location and St. Leo C.S. French Immersion Boundary Map





DURHAM CATHOLIC DISTRICT SCHOOL BOARD
Learning and Living in Faith

**St. Leo CS Historical RT Enrolment
(Grades 1 to 8)**

Year	JK	SK	Gr1	Gr2	Gr3	Gr4	Gr5	Gr6	Gr7	Gr8	Total
2012			29	29	28	35	42	56	53	44	316
2013			16	28	31	17	17	36	32	40	217
2014			11	16	15	21	16	21	34	34	168
2015			7	15	16	17	20	14	19	35	143
2016			11	8	16	16	17	19	12	20	119
2017			7	11	10	17	18	18	20	12	113
2018			6	8	11	12	17	18	18	18	108
2019			8	5	11	8	12	15	15	16	90
2020			8	9	6	15	10	12	17	16	93
2021			13	10	15	6	16	11	9	17	97

HISTORICAL REGULAR TRACK DATA

**St. Leo CS Historical FI Enrolment
(Grades 1 to 8) with JK/SK**

Year	JK	SK	Gr1	Gr2	Gr3	Gr4	Gr5	Gr6	Gr7	Gr8	Total
2012	48	63	45	41	31	24	30	18	0	0	300
2013	16	25	19	14	11	17	18	27	19	0	166
2014	19	18	24	20	27	22	17	0	0	0	147
2015	15	22	19	22	14	27	22	17	0	0	158
2016	8	17	11	15	20	11	24	22	10	0	138
2017	16	9	13	14	12	21	11	22	21	8	147
2018	13	17	9	11	14	11	20	11	17	19	142
2019	15	16	11	9	9	12	12	20	9	18	131
2020	22	17	15	14	7	9	10	11	20	11	136
2021	37	33	18	24	20	16	18	29	9	15	219

St. Bridget CS Historical RT Enrolment

Year	JK	SK	Gr1	Gr2	Gr3	Gr4	Gr5	Gr6	Gr7	Gr8	Total
2012	50	52	56	65	74	63	56	51	48	41	556
2013	59	47	47	49	54	66	60	49	47	48	526
2014	40	56	42	47	47	56	65	57	52	45	507
2015	35	43	52	39	49	45	56	66	57	53	495
2016	26	34	42	53	42	46	47	54	68	57	469
2017	32	27	36	41	53	42	46	48	48	66	439
2018	37	34	29	35	42	51	41	46	47	46	408
2019	28	37	35	29	37	43	49	43	42	50	393
2020	23	35	41	33	31	36	43	47	39	42	370
2021	31	29	38	44	32	30	38	41	48	38	369

St. John Paul II CS Historical RT Enrolment

Year	JK	SK	Gr1	Gr2	Gr3	Gr4	Gr5	Gr6	Gr7	Gr8	Total
2012	0	0	0	0	0	0	0	0	0	0	0
2013	34	31	20	22	17	20	23	14	24	17	222
2014	38	45	19	20	28	22	23	25	15	25	260
2015	35	44	18	22	20	27	22	21	25	17	251
2016	30	36	23	17	23	20	27	22	20	25	243
2017	28	33	18	25	19	23	19	28	21	18	232
2018	29	26	15	22	29	20	25	18	27	21	232
2019	20	30	15	17	23	29	19	25	16	27	221
2020	22	17	20	14	23	22	28	18	26	16	206
2021	16	20	19	23	20	29	27	31	18	25	228





DURHAM CATHOLIC DISTRICT SCHOOL BOARD

Learning and Living in Faith

St. Leo CS Projected RT Enrolment (Grades 1 to 8)

Year	JK	SK	Gr1	Gr2	Gr3	Gr4	Gr5	Gr6	Gr7	Gr8	Total
2022			8	14	10	16	7	14	11	8	88
2023			10	9	15	11	18	7	16	12	99
2024			7	10	10	17	12	18	8	18	101
2025			7	8	12	12	18	13	21	9	100
2026			8	9	9	14	13	19	15	24	111
2027			10	10	11	11	16	14	23	18	112
2028			11	11	12	12	13	17	17	26	118
2029			12	12	13	13	14	14	19	19	117
2030			14	14	14	15	15	15	17	23	127
2031			16	16	17	17	18	18	19	20	140

St. Bridget CS Projected RT Enrolment

Year	JK	SK	Gr1	Gr2	Gr3	Gr4	Gr5	Gr6	Gr7	Gr8	Total
2022	29	29	28	38	44	32	30	38	37	48	353
2023	30	30	29	29	39	45	33	31	35	38	340
2024	33	33	31	31	31	42	48	36	31	38	354
2025	37	37	36	36	36	36	46	50	35	33	384
2026	44	44	43	43	43	43	43	53	53	42	451
2027	52	52	50	50	50	50	50	50	57	61	525
2028	60	60	59	59	59	59	59	59	56	65	594
2029	70	70	69	69	69	69	69	69	66	66	683
2030	80	80	78	78	78	78	78	78	76	78	783
2031	89	89	88	88	88	88	88	88	85	87	876

PROJECTED REGULAR TRACK DATA – STATUS QUO

St. Leo CS Projected FI Enrolment (Grades 1 to 8) with JK/SK

Year	JK	SK	Gr1	Gr2	Gr3	Gr4	Gr5	Gr6	Gr7	Gr8	Total
2022	25	37	35	17	22	19	15	17	26	9	222
2023	25	26	34	33	15	21	18	15	16	25	228
2024	25	25	26	32	30	15	20	17	14	16	219
2025	25	25	25	24	29	29	14	19	16	14	221
2026	26	26	25	24	22	28	27	13	18	16	226
2027	28	28	26	24	21	21	27	26	13	17	230
2028	29	29	26	24	21	20	20	25	25	12	232
2029	30	30	26	25	22	20	20	19	24	24	240
2030	32	32	26	25	22	21	20	19	18	24	237
2031	34	34	26	25	22	21	20	19	18	18	236

St. John Paul II CS Projected RT Enrolment

Year	JK	SK	Gr1	Gr2	Gr3	Gr4	Gr5	Gr6	Gr7	Gr8	Total
2022	18	17	10	21	24	20	29	27	31	18	215
2023	19	18	9	11	22	24	20	29	27	31	209
2024	20	20	10	10	12	23	25	21	30	28	199
2025	21	21	11	12	12	13	24	26	22	31	192
2026	22	21	13	14	14	13	15	25	28	23	189
2027	24	24	14	16	16	16	15	17	27	30	200
2028	27	27	17	17	19	19	18	17	19	29	210
2029	30	30	20	21	21	21	21	21	20	22	226
2030	32	32	23	23	24	23	24	24	23	23	252
2031	35	35	25	26	27	27	26	26	27	26	279

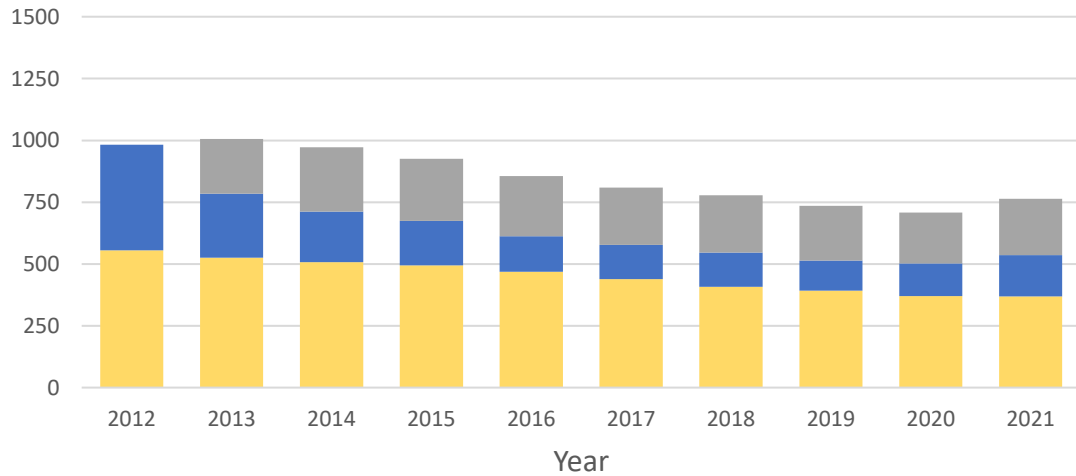


Rooted in Faith
Excellence | Equity | Engagement



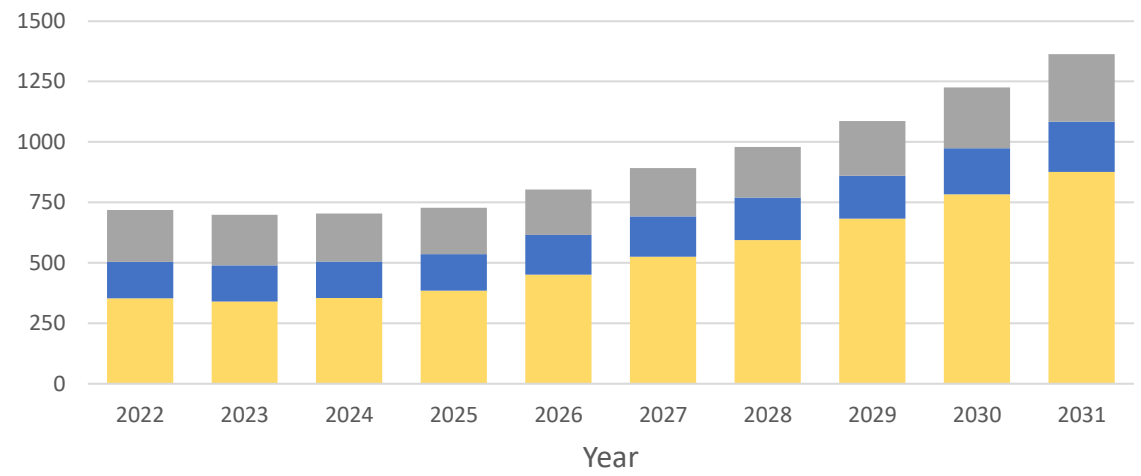
HISTORICAL AND PROJECTED REGULAR TRACK DATA – STATUS QUO

Historical Regular Track (English) Enrolment
St. Leo CS, St. John Paul II CS and St. Bridget CS



■ St. Bridget RT Program ■ St. Leo RT Program
■ St. John Paul II RT Program

Projected Regular Track (English) Enrolment
St. Leo CS, St. John Paul II CS and St. Bridget CS



■ St. Bridget RT Program ■ St. Leo RT Program
■ St. John Paul II RT Program



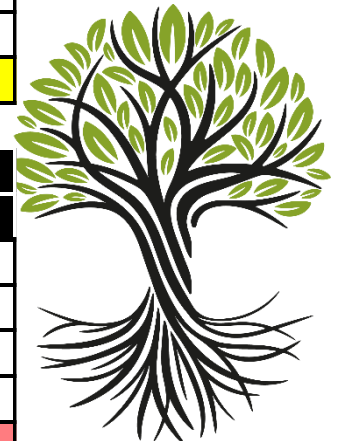


PROJECTED ENROLMENT DATA – STATUS QUO

St. Leo	ACTUAL		PROJECTED									
	Oct-21	May-22	2022	2023	2024	2025	2026	2027	2028	2029	2030	2031
Regular Track (Grades 1-8)	97	95	88	99	101	100	111	112	118	117	127	140
Kindergarten	70	64	62	50	50	51	53	55	58	60	63	68
French Immersion	147	144	160	178	169	170	173	175	175	180	174	168
Total	314	303	311	327	320	321	337	342	351	357	364	376
Capacity	266	266	266	266	266	266	266	266	266	266	266	266
Utilization	118%	114%	117%	123%	120%	121%	127%	129%	132%	134%	137%	142%

St. John Paul II	ACTUAL		PROJECTED									
	Oct-21	May-22	2022	2023	2024	2025	2026	2027	2028	2029	2030	2031
Regular Track	228	223	215	209	199	192	189	200	210	226	252	279
French Immersion	38	38	23	0	0	0	0	0	0	0	0	0
Total	266	261	238	209	199	192	189	200	210	226	252	279
Capacity	458	458	458	458	458	458	458	458	458	458	458	458
Utilization	58%	57%	52%	46%	44%	42%	41%	44%	46%	49%	55%	61%

St. Bridget	ACTUAL		PROJECTED									
	Oct-21	May-22	2022	2023	2024	2025	2026	2027	2028	2029	2030	2031
Regular Track	369	364	353	340	354	384	451	525	594	683	783	876
French Immersion	0	0	0	0	0	0	0	0	0	0	0	0
Total	369	364	353	340	354	384	451	525	594	683	783	876
Capacity	513	513	513	513	513	513	513	513	513	513	513	513
Utilization	72%	71%	69%	66%	69%	75%	88%	102%	116%	133%	153%	171%





**DURHAM CATHOLIC
DISTRICT SCHOOL BOARD**
Learning and Living in Faith

Staffing the Programs



Rooted in Faith
Excellence | Equity | Engagement



Staffing

- When creating classroom organizations at any school, the board will carefully review the enrolment and implement non-split classes wherever possible;
- A student may be placed in a split class for 1 or 2 years, however it is highly unlikely a student will be in a split class for the entirety of grades 1 through 8;
- Classroom organizations are decided in close consultation between the board and the school Principal. School and student needs are reviewed when determining classroom structures;
- Higher enrolment numbers at a school can provide greater flexibility and options when determining classroom organizations;
- Limited number of Primary classes can be at 23 (10% system wide or approximately 20 a year);
- Overall average Junior/Intermediate class size must be no more than 24.5:1;
- If the Junior/Intermediate class size average is higher than 24.5:1 then additional classes may be formed.





**DURHAM CATHOLIC
DISTRICT SCHOOL BOARD**
Learning and Living in Faith

Student Transportation



Rooted in Faith
Excellence | Equity | Engagement



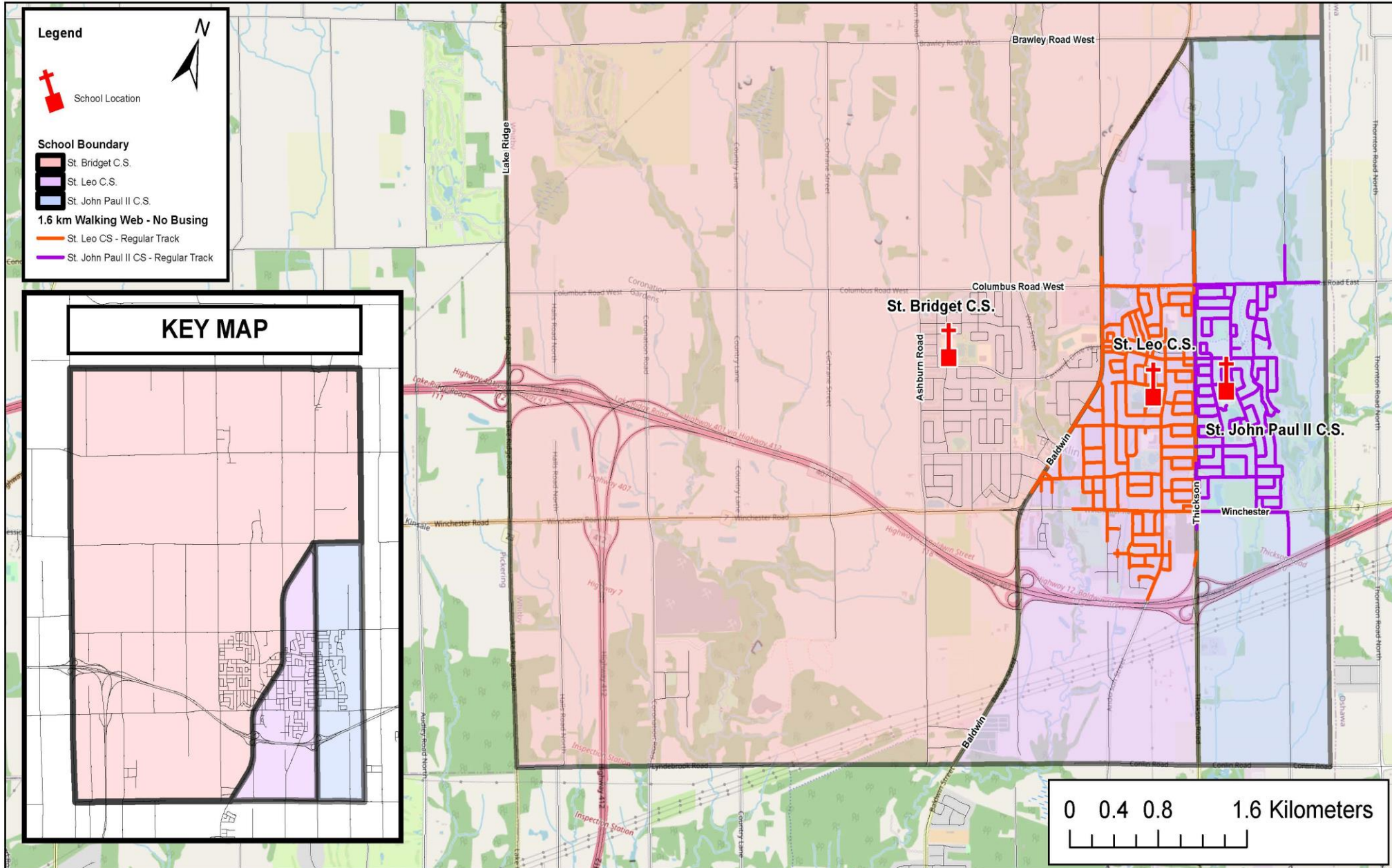
Student Transportation

- Transportation is provided to students who reside over 1.6Km from the designated area school. Durham Student Transportation Services (DSTS) determines distance eligibility utilizing a Geographic Information System (GIS) and accessing walk paths to the designated area school.
- If a family chooses to attend an out of area school, transportation is not provided.
- Once a boundary change is approved, communications will be sent out to all currently registered families regarding transportation eligibility
- Currently Thickson Rd creates a no crossing scenario.
- The Region is in the final stages of a Brooklin Bypass Study, and Thickson Rd is no longer the preferred option.
- DCDSB and DSTS will work with local government to make requests related to a crossing guard, which if implemented would remove the need for busing across Thickson Rd unless over 1.6kms.



DCDSB - Brooklin Community - Catholic Elementary Schools

Current School Location, Regular Track (English) Boundary and 1.6 km Walking Web Map

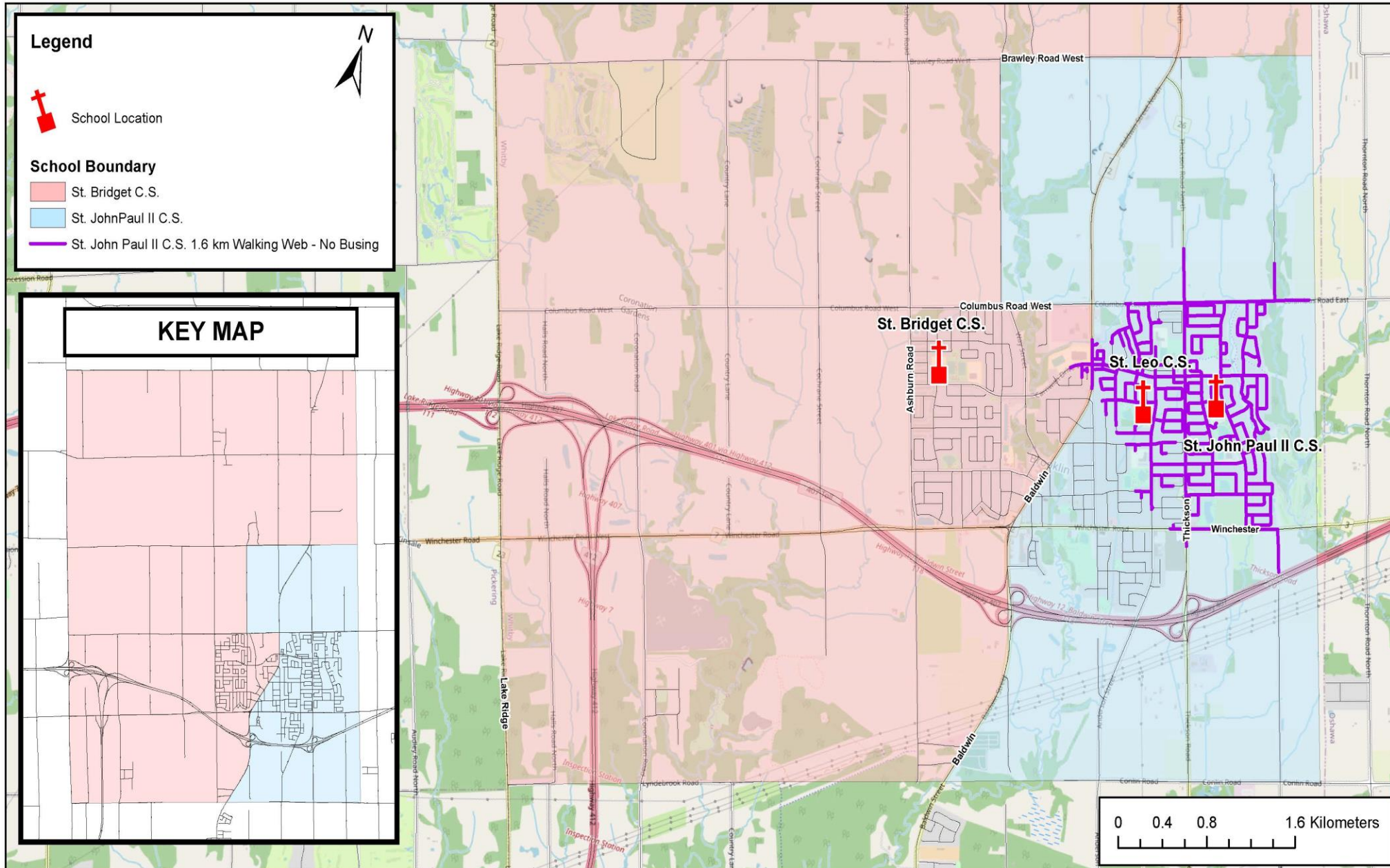


Walking
Web Map
1.6 km



DCDSB - Brooklin Community - Catholic Elementary Schools

Proposed School Location, Regular Track (English) Boundary and 1.6 km Walking Web Map



Walking
Web Map
1.6 km



Review of Public Q&A



By way of synopsis the following is a general representation of the nature of questions or comments received, along with the response, none of which are unexpected and are typical in this type of process:

- Concerns around the disruptive nature of this type of change for students.
 - Any type of change is going to have some disruptions, and staff try to minimize those.
- Personal questions about how the change will impact them based on their address.
 - These are answered using the mapping.
- Busing as an option and the potential safety concerns of having to walk across Thickson road if there is a crossing guard added in the future.
 - A cross-guard has to be approved by the Town of Whitby. Durham Student transportation Services (DTST) works through this process and provides busing based on the DSTS policy.
- Questioning the validity of the projections and the timelines of the growth in Brooklin.
 - The projections are based on plans of subdivisions that have approved housing unit yields. These numbers are quite consistent and there can be variations in timelines for when the development is built, but the timelines don't change the yields.
- The potential of dividing siblings if one child is in French Immersion but the other child isn't.
 - French immersion is a choice that families have to make.
- The potential for families to choose to leave the system due to not having an English program in the French Immersion school to transition too if they are not succeeding in the FI program.
 - School staff support students in their success and invest resources to ensure the students complete their education, but the FI program does have a demission rate.





DURHAM CATHOLIC DISTRICT SCHOOL BOARD

Learning and Living in Faith

- Having enough students in either impacted school to offer viable programming.
 - We have other schools in the system with similar or smaller populations. This change is designed to position the Brooklin schools to balance the future growth and maintain viable long term student populations and capacity totals.
 - They also wanted to know the number of students that moved from St. John Paul II as part of the 2021 French immersion consolidation at St. Leo. Out of the 80 grade 1-5 French Immersion students at St. John Paul II in 2020, 24 chose not to move over to St. Leo CS in 2021 for the FI Program.
 - The table below reflects the current totals of English and French students at St. Leo. This was a chart that some of the parents asked to see for comparison.

ST. LEO ENROLMENT: AS OF NOVEMBER 10, 2022			
Grade Level	RT (English)	French Immersion	Total in Grade
JK		34	34
SK		33	33
1	10	24	34
2	18	17	35
3	10	21	31
4	15	19	34
5	8	12	20
6	16	15	31
7	11	16	27
8	8	8	16
Total (Includes the JK/SK)	163	199	295

- Childcare options.
 - Before and after programs are offered in Brooklin schools. The St. Leo full service childcare program is run by the YMCA.



Rooted in Faith
Excellence | Equity | Engagement



**DURHAM CATHOLIC
DISTRICT SCHOOL BOARD**
Learning and Living in Faith

Regular English Track Recommended Option



Rooted in Faith
Excellence | Equity | Engagement



Rationale Recommended Option

Mandate – to optimize the Regular (English) track programs in Brooklin for future growth

- Enrolment projections – all three schools have minimal growth until it increases in 3-7 years.
- Program viability – small inefficient programming and multiple split classing
- A single track French immersion located at St. Leo Catholic School providing for a unique French learning environment and solidifying the presence of three viable Catholic Schools in Brooklin
- Public comments and questions – general synopsis in the report, and full list of questions/comments on the webpage
- Consolidation of programs aligns the stewardship of and equitable allocation of financial resources as outlined in the Strategic Plan under the Managing Resources pillar





Recommended Option

Therefore, the recommended option, as brought forward by the Committee and endorsed by Administrative Council is:

THAT the Durham Catholic District School Board approve the proposed boundary revisions to the Brooklin Regular (English) Track program.

THAT the change in boundary of the Brooklin Regular (English) Track boundary be implemented for September 2023.

THAT the current grade 6 and 7 Regular (English) students presently attending St. Leo Catholic School be allowed to graduate from St. Leo subject to sufficient interest and viable class sizes





Recommended Option

This option allows the capacity of each school to be balanced in the long-term and positions the board to be able to apply for new schools in Brooklin, as there isn't expected to be any more space in the three schools to accommodate the growth beyond 2031, when additional school(s) would be required.

St. Leo	ACTUAL		PROJECTED									
	Oct-21	May-22	2022	2023	2024	2025	2026	2027	2028	2029	2030	2031
Regular Track (Grades 1-8)	97	95	89	28	16	0	0	0	0	0	0	0
Kindergarten	70	64	62	58	58	58	58	58	58	58	58	58
French Immersion	147	144	160	178	169	170	173	175	175	180	174	168
Total	314	303	311	264	243	228	231	233	233	238	232	226
Capacity	266	266	266	266	266	266	266	266	266	266	266	266
Utilization	118%	114%	117%	99%	92%	86%	87%	87%	88%	89%	87%	85%

St. John Paul II	ACTUAL		PROJECTED									
	Oct-21	May-22	2022	2023	2024	2025	2026	2027	2028	2029	2030	2031
Regular Track	228	223	215	280	282	296	312	334	362	392	440	492
French Immersion	38	38	23	0	0	0	0	0	0	0	0	0
Total	266	261	238	280	282	296	312	334	362	392	440	492
Capacity	458	458	458	458	458	458	458	458	458	458	458	458
Utilization	58%	57%	52%	61%	61%	65%	68%	73%	79%	86%	96%	108%

St. Bridget	ACTUAL		PROJECTED									
	Oct-21	May-22	2022	2023	2024	2025	2026	2027	2028	2029	2030	2031
Regular Track	369	364	353	340	351	370	412	455	490	541	601	653
French Immersion	0	0	0	0	0	0	0	0	0	0	0	0
Total	369	364	353	340	351	370	412	455	490	541	601	653
Capacity	513	513	513	513	513	513	513	513	513	513	513	513
Utilization	72%	71%	69%	66%	68%	72%	80%	89%	96%	105%	117%	127%

UTILIZATION

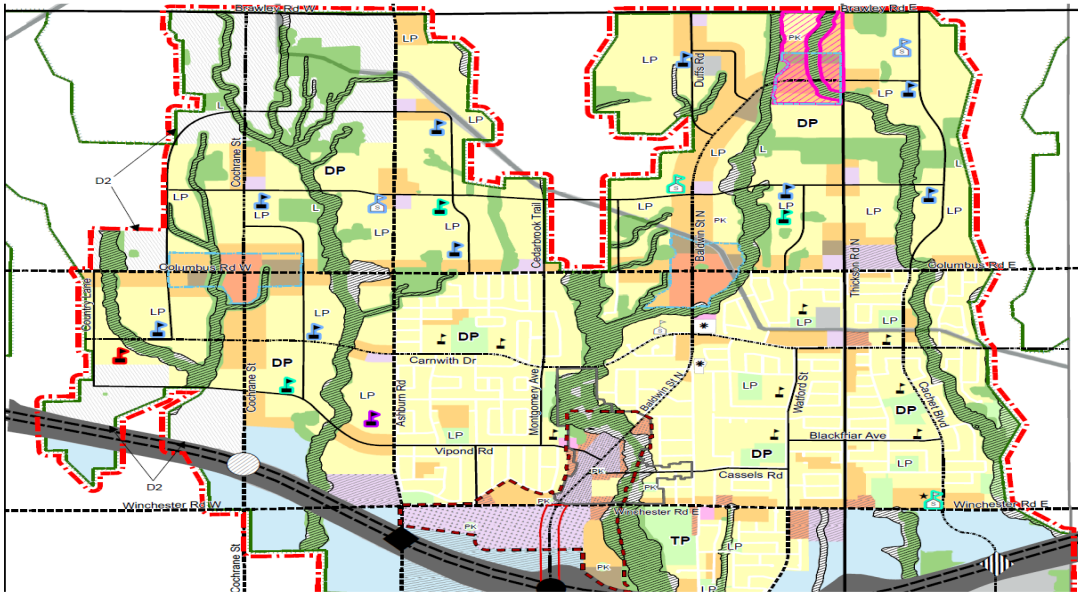
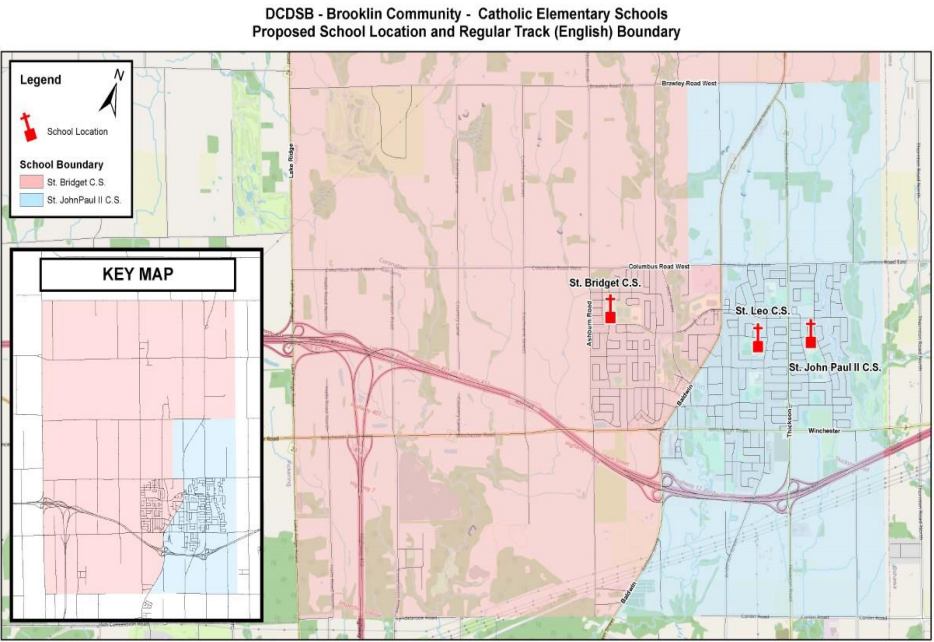
< 80% > 120% 80% - 120%





Recommended Option

The only adjust from the original “In-principle” recommendation was to adjust the physical boundary associated with the annexed part of the St. Bridget growth area into the St. John Paul II boundary. The annexed portion will only include the new development and will not displace families that are currently residing in this area and attending St. Bridget.





**DURHAM CATHOLIC
DISTRICT SCHOOL BOARD**
Learning and Living in Faith

Recommended Option - Rollout

- All of the RT boundary for St. Leo CS to be absorbed into the St. John Paul II boundary in 2023, including an annexation of a study area from the St. Bridget boundary into the St. John Paul II boundary.
- If your child is currently at St. Leo in Grade 1-5 RT, they would attend St. John Paul II CS in September 2023
- If your child is currently at St. Leo in Grades 6&7 RT they can graduate out of St. Leo CS pending program viability
- St. Leo CS will continue to have a JK-SK program



Rooted in Faith
Excellence | Equity | Engagement



**DURHAM CATHOLIC
DISTRICT SCHOOL BOARD**
Learning and Living in Faith

Implementation and Future Considerations



Rooted in Faith
Excellence | Equity | Engagement



**DURHAM CATHOLIC
DISTRICT SCHOOL BOARD**
Learning and Living in Faith

Implementation and Future Considerations

If the final recommendation is approved by the Board of Trustees, there will be a detailed plan that will consider the following:

- Transportation
- Transition Plans
- Introduction to school community
- Communication



Rooted in Faith
Excellence | Equity | Engagement



Implementation and Future Considerations

Transportation

The Board's current transportation policy will be applied to the recommended option with regards to busing and walking distances to the impacted schools.

The following will be considered regarding transporting of students beginning in September of 2023:

- Durham Student Transportation Services (DSTS) to review Thickson Road cross-walk viability;
- Students currently at St. Leo that are greater than 1.6km from St. John Paul II and have to cross Thickson Rd will be eligible for a bus;
- Final determination of eligibility to be communicated in 2023.





Implementation and Future Considerations

Transition Plan

Students and families currently in Grade 6 and 7 Regular Track at St. Leo CS will be asked to complete a survey about their preference to remain at St. Leo CS for Grades 7 and 8. Numbers from the survey will be reviewed to determine whether remaining at St. Leo to complete their elementary studies is an option.

Activities will be planned to connect the students and staff between the two schools. In the past these activities have included:

- Tours
- BBQs
- Community team building





**DURHAM CATHOLIC
DISTRICT SCHOOL BOARD**
Learning and Living in Faith

Implementation and Future Considerations

Communication Plan

Letters to families impacted by the decision

Open house

Transition newsletter



Rooted in Faith
Excellence | Equity | Engagement



**DURHAM CATHOLIC
DISTRICT SCHOOL BOARD**
Learning and Living in Faith

Questions and Discussion



Rooted in Faith
Excellence | Equity | Engagement